

**NATIONAL VAN**

***THE NVB  
SHUTTLE SERIES***

***Economical vehicle  
solutions that just make  
sense.***



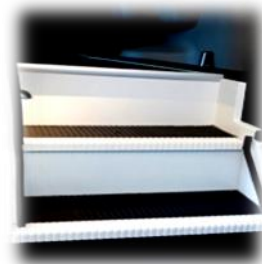
**Rule #1 - Keep it Simple.**

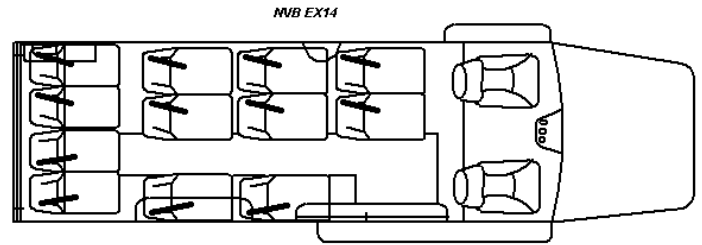
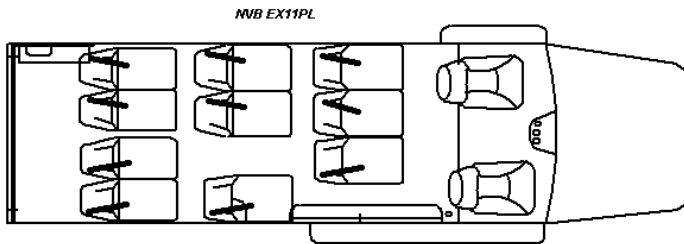
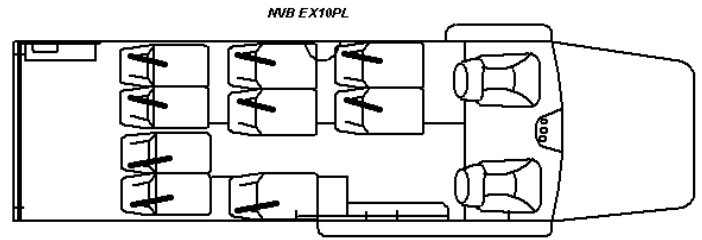
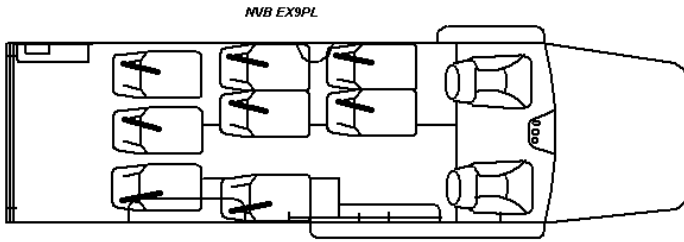
**Rule #2 - Provide Choices.**

***The Shuttle Series offers  
intelligent choices that enable  
you to meet your Clients'  
needs.***



**NVB offers the passenger count,  
luggage capacity, seating options,  
and functional amenities your  
service requires at prices that  
work for you.**





**Our 10, 11 and 12 Passenger Center-Aisle Models offer over 60cu.ft of luggage capacity. For larger groups, our 14 Passenger Model forfeits the luggage but not the added convenience or comfort.**



**The NVB Shuttle Series combines functionality, durability and value to create the shuttle that works and keeps on working for you hour after hour, year after year.**

*Proudly represented by:*